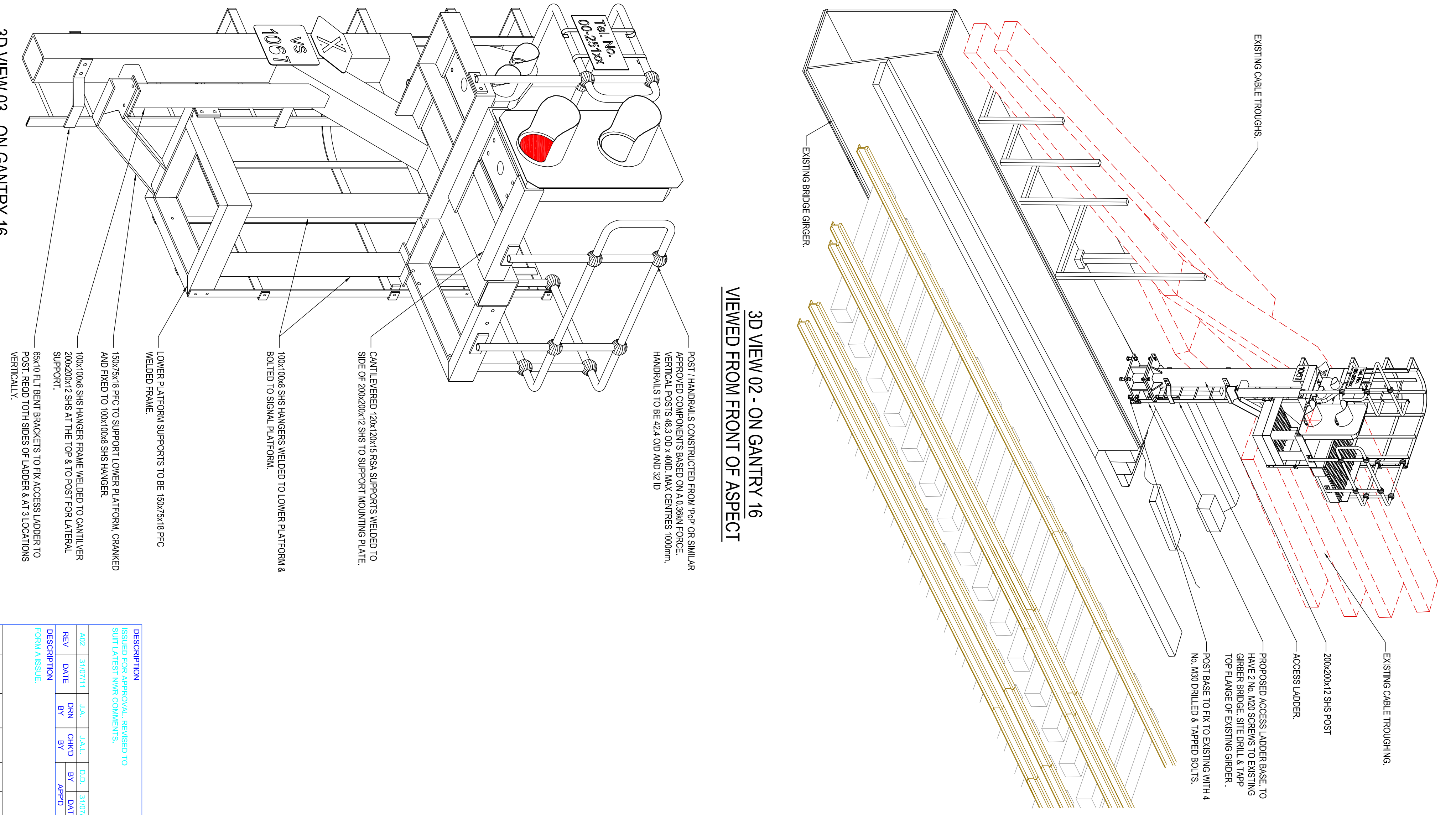


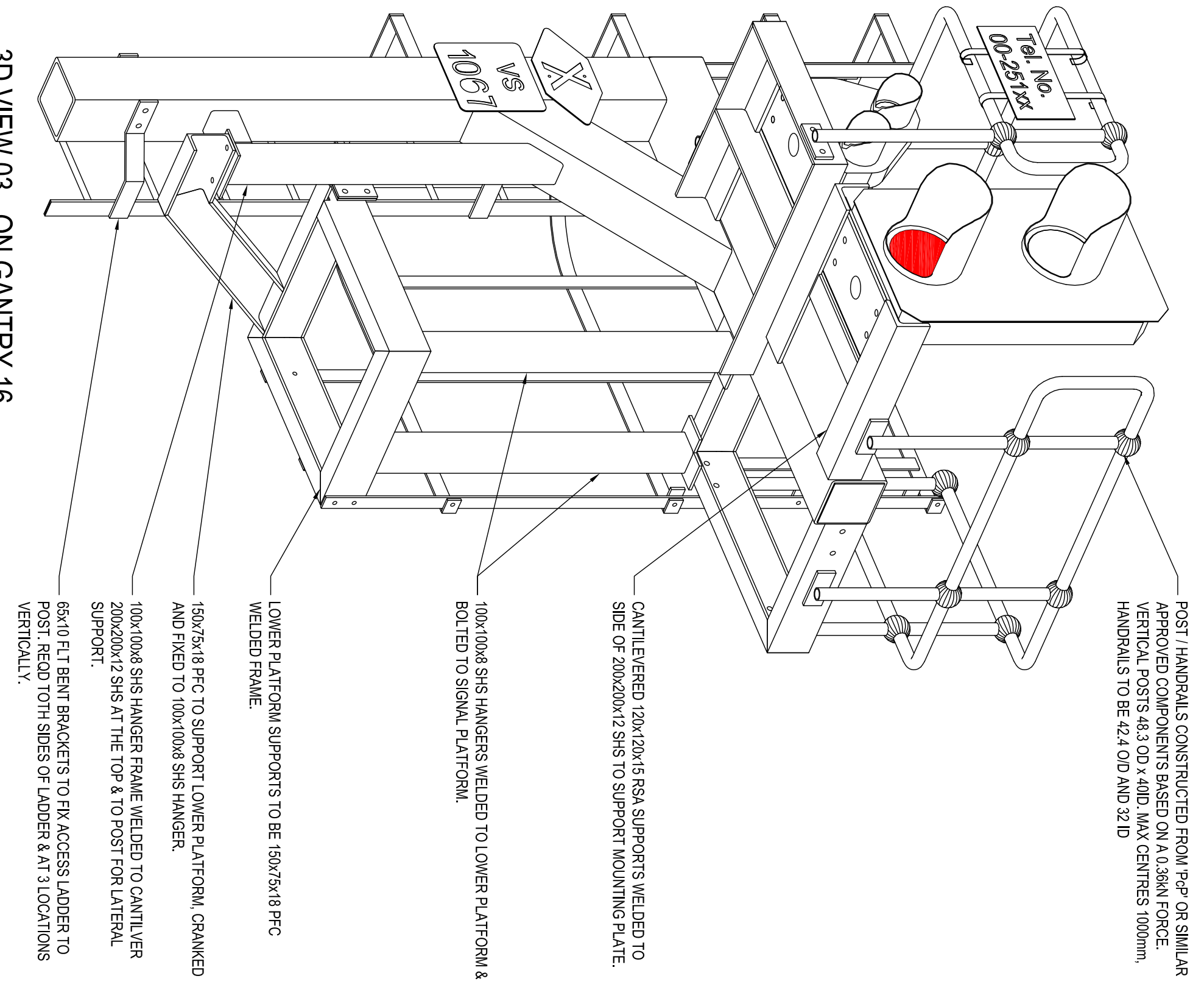
RED ASPECT
EXISTING 62942 597
EXISTING 53942 540
EXISTING 110000

- LADDER CAGE & HOOPS 610x504x112 WELODED TO 387mm BS RAILS. LADDER CAGE TO FORM BARRIER TO SIGNAL PLATFORM.
- POST / HANDRAILS CONSTRUCTED FROM P&P OR SIMILAR APPROVED COMPONENTS BASED ON A 0.38kN FORCE. VERTICAL POSTS 48.3 OD x 40ID. MAX CENTRES 1000mm. HANDRAILS TO BE 42.4 OD AND 22 ID
- STANDARD 2 APERTURE, 4 ASPECT LED DORMAN SIGNAL HEAD. TO BE MOUNTED ON PLATE & FIXED TO RSA SUPPORTS.
- 41x100 GREEN MESH FLOORING PANELS BY P&P OR SIMILAR APPROVED. CW 130x81FL TO EDGE TO FORM 100mm KICKER.
- SIGNAL PLATFORM SUPPORT TO BE 150x75x18 PFC WELODED FRAME.
- OUTLINE OF EXISTING STRUCTURE ABOVE.
- 120x120x15 RSA SUPPORTS WELODED TO SIDE OF 200x200x12 SHS TO SUPPORT MOUNTING PLATE.
- P&S SIGNAL, MOUNTED ON PLATE. FIXED TO TOP OF RSA SUPPORT ANGLES.
- 100x100x8 SHS HANGERS WELODED TO LOWER PLATFORM & BOLTED TO SIGNAL PLATFORM.
- 41x100 GREEN MESH FLOORING PANELS BY P&P OR SIMILAR APPROVED. CW 130x81FL TO EDGE TO FORM 100mm KICKER.
- LOWER PLATFORM SUPPORTS TO BE 150x75x18 PFC WELODED FRAME.
- 150x75x18 PFC TO SUPPORT LOWER PLATFORM. CRANKED AND FIXED TO 100x100x8 SHS HANGER.
- 100x100x8 SHS HANGER FRAME WELODED TO CANTILVER 200x200x12 SHS AT THE TOP & TO POST FOR LATERAL SUPPORT.
- 65x10 FLT BENT BRACKETS TO FIX ACCESS LADDER TO POST. READ TO TH SIDES OF LADDER & AT 3 LOCATIONS VERTICALLY.
- ACCESS LADDER.
- 200x200x12 SHS STOOL CW 25mm THK END PLATE. FIXED TO TOP OF BRIDGE GIRDER WITH 4 No. M20 SCREWS. DRILL & TAP TOP FLANGE OF BRIDGE GIRDER TO SUIT. SEE LUNDY DRAWING NUMBER P9052-147-033 FOR DETAILS.
- EXISTING BRIDGE GIRDER.

3D VIEW 01 - ON GANTRY 16



3D VIEW 02 - ON GANTRY 16
VIEWED FROM FRONT OF ASPECT



3D VIEW 03 - ON GANTRY 16
VIEWED FROM US

- EXISTING CABLE TROUGHING.
- 200x200x12 SHS POST
- ACCESS LADDER.
- PROPOSED ACCESS LADDER BASE TO HAVE 2 No. M20 SCREWS TO EXISTING GIRDER BRIDGE. SITE DRILL & TAP TOP FLANGE OF EXISTING GIRDER.
- POST BASE TO FIX TO EXISTING WITH 4 No. M20 DRILLED & TAPPED BOLTS.
- EXISTING BRIDGE GIRDER.
- POST / HANDRAILS CONSTRUCTED FROM P&P OR SIMILAR APPROVED COMPONENTS BASED ON A 0.38kN FORCE. VERTICAL POSTS 48.3 OD x 40ID. MAX CENTRES 1000mm. HANDRAILS TO BE 42.4 OD AND 22 ID
- CANTILVERED 120x120x15 RSA SUPPORTS WELODED TO SIDE OF 200x200x12 SHS TO SUPPORT MOUNTING PLATE.
- 100x100x8 SHS HANGERS WELODED TO LOWER PLATFORM & BOLTED TO SIGNAL PLATFORM.
- LOWER PLATFORM SUPPORTS TO BE 150x75x18 PFC WELODED FRAME.
- 150x75x18 PFC TO SUPPORT LOWER PLATFORM. CRANKED AND FIXED TO 100x100x8 SHS HANGER.
- 100x100x8 SHS HANGER FRAME WELODED TO CANTILVER 200x200x12 SHS AT THE TOP & TO POST FOR LATERAL SUPPORT.
- 65x10 FLT BENT BRACKETS TO FIX ACCESS LADDER TO POST. READ TO TH SIDES OF LADDER & AT 3 LOCATIONS VERTICALLY.

NOTES:

1. ALL DIMENSIONS ARE IN MILLIMETRES U.N.O.
2. PRESENCE OF EXISTING SERVICES AND STRUCTURES SHOULD BE INVESTIGATED PRIOR TO COMMENCEMENT OF WORK ON SITE. ADEQUATE MEASURES SHOULD BE MADE TO PROTECT OR DIVERT AS APPROPRIATE.
3. BOLTS TO BE GALVANISED TO BS7337 PART 6 SPIN DOWN SHAF-T AFTER GALVANISING.
4. HOT DIP GALVANISE TO BS EN ISO 1461 AND IN ACCORDANCE WITH NETWORK RAIL CODE OF PRACTICE INF/GEN/CI/002 (ENVIRONMENT CLASSIFICATION C2).
5. PAINT MATT BLACK ABOVE SCOFFIT LINE OF ROOM (E.G. MASONRY PANELS) & SIGNAL CABINETS (E.G. INF/GEN/CI/002) 1st 5 PROTECTIVE COATINGS AND SEALANTS.
6. STANCHIONS AND LADDERS TO BE HOT DIPPED GALVANISED ONLY. DESIGN LIFE - 25 YEARS.
7. WELDING TO BS EN 1011-1:1998 & BS EN 1011-2:2001 U.O.S. SYMBOLS TO BS EN 22553:1995
8. MATERIALS:
PLATE: BS EN10025 S275
FOR THICKNESS LESS THAN 15mm GRADE JR
FOR THICKNESS 15 - 50mm GRADE J0
FOR THICKNESS 55 - 75mm GRADE J2
STEEL SECTIONS: BS EN 10025 S275 GRADE J0
HOLLOW SECTIONS: BS EN 10210-1 S355 GRADE J2H
FABRICATION TO BE IN ACCORDANCE WITH BS5950:1:2
9. KICKFLAT FLOORING AND CABLE TRAY LAYOUT SHOWN ON A DIFFERENT DRAWING FOR CLARITY
10. HANDRAIL TO BE GALVANISED AND PAINTED BLACK IN ACCORDANCE WITH RELEVANT SPECIFICATION. P&P TYPE HANDRAIL STANDARDS WITH 82 DIA BALLS AND 42 DIA TUBULAR SHANK.

ALL SIZES SHOWN ARE PENDING
STRUCTURAL DESIGN
CALCULATIONS

| DESCRIPTION | ISSUED FOR APPROVAL | REVISED TO SUIT LATEST NMR COMMENTS. |
|-------------|---------------------|--------------------------------------|
| A02 | 13/07/11 | J.A. |
| REV | DATE | BY |
| DESCRIPTION | FORM A ISSUE | |

| DATE | BY | DATE | BY | DATE | BY |
|----------|------|----------|------|----------|------|
| 23/07/11 | J.A. | 23/07/11 | J.A. | 23/07/11 | J.A. |
| 06/07/11 | J.A. | 06/07/11 | J.A. | 16/07/11 | J.A. |

THAMESLINK PROGRAMME

GANTRY 16

3D VIEWS TO SIGNAL VS1067

CHAINAGE 10.957 km

DRWN: J.A. CHECKED: J.A.L. APPROVED: G.D.
DATE: 06/07/11 DATE: 06/07/11 DATE: 16/07/11
SCALE: 1:40 & 1:10

THIS DRAWING IS PRIVATE AND CONFIDENTIAL. ANY USE BY THE RECIPIENT OF LUNDY PROJECTS IS LIMITED TO THE PROJECT FOR WHICH IT WAS PROVIDED. IT IS NOT TO BE REPRODUCED OR TRANSMITTED IN ANY FORM OR BY ANY MEANS, ELECTRONIC OR MECHANICAL, INCLUDING PHOTOCOPYING, RECORDING, OR BY ANY INFORMATION STORAGE AND RETRIEVAL SYSTEM.

DWG No: **N284-LUN-DRG-CV-000081**

Thameslink Programme
27 Great Suffolk Street
London, SE1 1NS
Tel: 0207 023 3559

Network Rail

196 Chislehurst, Stockport, Cheshire, SK5 3BG
Tel: 0161 432 2906

LUNBY

email: info@lundyprojects.co.uk
http://www.lundy-projects.co.uk

CLIENT: **NETWORK RAIL**
JAMES FORBES HOUSE